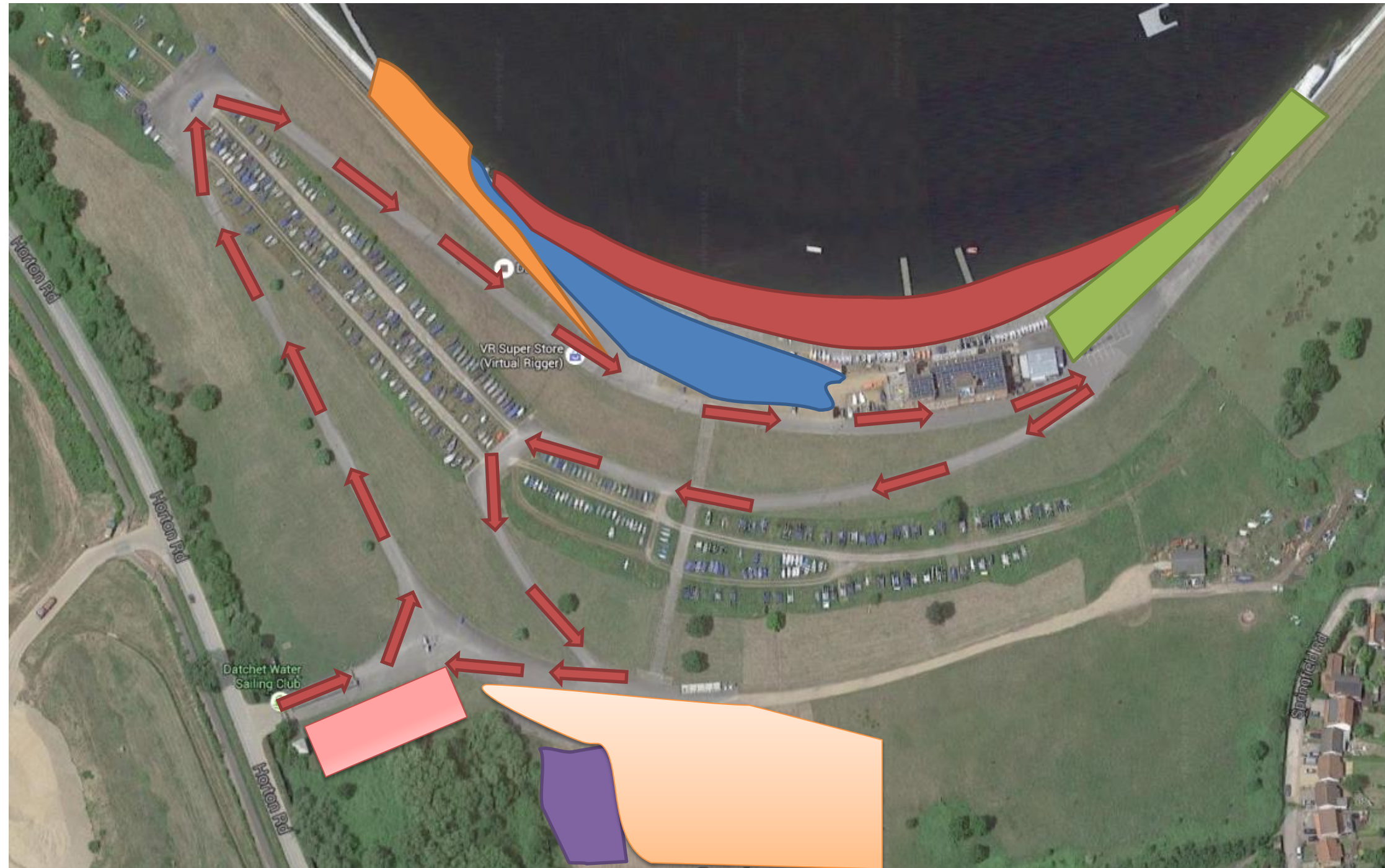


## SITE ARRIVAL MAP



# SITE ARRIVAL MAP

## KEY



= Directional arrow



= Topper Trailer Parking



= Camper Van Parking



= Boat drop off area and evening boat storage



= RIB Launching / RIB trailer parking & officials parking



= Boat Evening Berthing as well as drop off point after racing

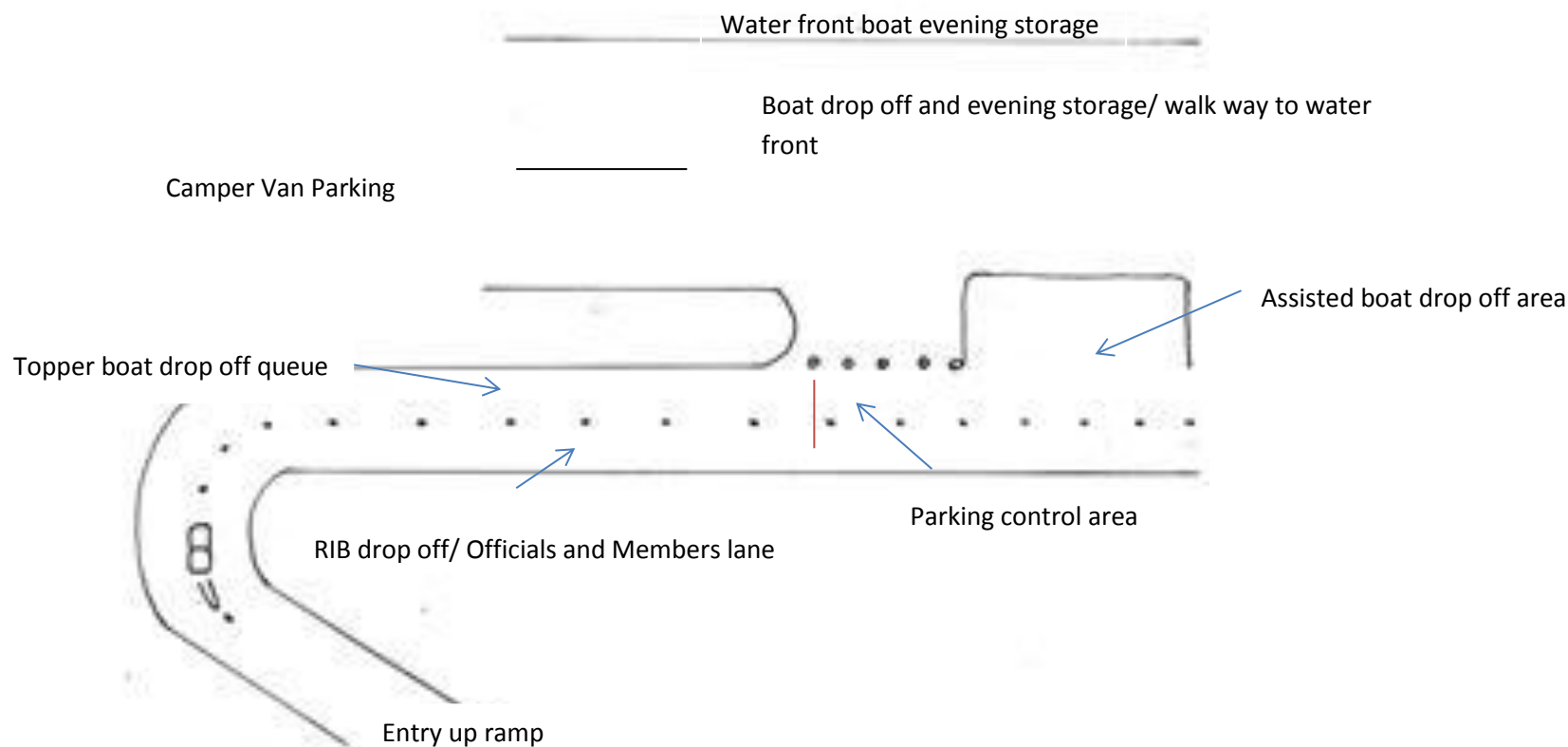


= Car Parking



= Tent camping and camper vans with tents

# SITE ARRIVAL MAP



On entering the site, turn left and make your way up to the clubhouse. On the first bend “shown above” the road will split into 2 lanes. The left hand lane will be designated to people dropping off their toppers. Once the boat is on it launching trolley with assistance from our team, all trailers and cars must be taken to the bottom for parking. If in a camper van you must drop your trailer down to the bottom for parking and then make your way up the right hand lane, advise an official that you are parking to stay the night and then you can park in the camper van designated area.

The Right had lane will be for RIB drop off/ Club and Event official and Members. Parking control will advise you where to go and park.

A Reminder that we are a Thames Water site and our By-laws state there are strictly no Dogs, BBQs or fires allowed on site. Thank you for all your co-operation and we wish you all the best with your event. DWSC Team.